



# NEWSLETTER

### In this issue:

Welcome - page 1

Reflection- Inside the Neurodivergent Classroom- page 1

Webinar- Keeping Teachers Well- page 2

Reaching out to The Kings School Muldersdrift- page 3

Proposed SAALED Webinars and Seminar Events- page 4 & 4

My School My Difference- Add SAALED- page 5

A heartfelt thank you to Michelle Decker- page 5

Conclusion- page 5

### Membership fees for 2026:

#### Subscription fees and Webinar rates for 2026.

#### School Annual Membership fee:

R2400.00 and entitles 6 teachers to join the webinars and seminar at the member rate thereafter non-member rates apply.

#### Individual Annual Membership fee:

R350.00 and entitles you to join all events at the member rate.

Webinar fees for members:  
R230.00 per webinar

Webinar fees for non-members:  
R320.00 per webinar

5% of all bookings will be donated to our Outreach School, Kings School Muldersdrift

Schools/individuals who are in need, please reach out to SAALED and we will do our best to accommodate you.

Please liaise with your school and make payment as soon as possible.

#### **BANK DETAILS:**

#### **S A ASSOC FOR LEARNING**

First National Bank

Account No: 62046846020

Branch code: 250655

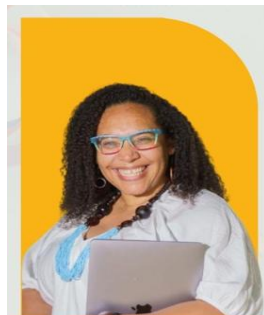
Please ensure that your name/school's name appears on any deposit notification.

Dear SAALED Members and Friends,

### Welcome

As we move through April and into May, we are reminded that learning is never one-size-fits-all. At the Southern African Association for Learning and Educational Differences, we continue to celebrate the diversity, resilience and potential of every learner and educational specialist.

This edition of the newsletter highlights meaningful conversations, professional development opportunities, and inspiring moments from our community. From inclusive education practices to learner well-being and innovative support strategies, we are encouraged by the passion of those working tirelessly to create spaces where every child feels seen, valued and empowered.



**Tarren Leigh**  
Agnew-Skalska

### Reflection- Inside the Neurodivergent Classroom

A memorable webinar, *Inside the Neurodivergent Classroom*, was presented by Tarren Leigh Agnew-Skalska and offered valuable insight into creating more inclusive and supportive learning environments. It was wonderful to gain the perspective of an international speaker joining us all the way from Ireland.

The session encouraged educators to step into the shoes of neurodivergent learners and explored practical, evidence-informed strategies that can positively impact engagement, behaviour and learning. Rather than focusing only on labels or behaviour management, the webinar highlighted thoughtful classroom design, self-regulation strategies, and inclusive teaching practices that benefit all learners.

A special highlight of the evening was Tarren Leigh's generous gift of mentorship, awarded to the school with the highest attendance at the webinar. Congratulations to Crawford International Sandton Preparatory and Pre-Primary on receiving this wonderful opportunity! In addition, Tarren also gifted each of our two Outreach Schools, Bahia Formosa and The King's School Muldersdrift, a six-month mentorship programme, a truly meaningful investment in supporting inclusive education and growth.

Join Our Next Exciting Webinar with Kolean Padayachi!

# Keeping TEACHERS WELL:

## BURNOUT, BALANCE & BOUNDARIES

This webinar will unpack burnout in the educational context, focusing on how prolonged stress, emotional labour and blurred boundaries impact both well-being and professional effectiveness. We will talk about what burnout looks like, why balance is often difficult to achieve and how unhealthy patterns can develop over time. Practical, evidence-based strategies will be shared to help educators and students establish healthier boundaries, restore balance, and build sustainable practices that support long-term well-being, both personally and professionally.



**KOLEAN PADAYACHI**

EDUCATIONAL PSYCHOLOGIST &  
ACADEMIC PROGRAMME  
COORDINATOR



**Tuesday  
19 May 2026**



**18h00**

MEMBERS: R 230.00  
NON MEMBERS R 320.00



[saaled.org.za](https://saaled.org.za)



To make a booking:

CLICK HERE



## Reaching out to The Kings School Muldersdrift

As you know, 5% of all money received for our webinars is donated to an Outreach School. Last year and this year we are supporting The Kings School Muldersdrift.

Thank you to each one of you who attended a webinar in 2025. SAALED, represented by Shirley Gray and Pearl Makhene, handed over 10 beautiful, strong, indigenous trees to TKSM on 9 March this year. David, Tanaka, James and Lendalani from Random Harvest Indigenous Nursery advised us on trees that grow well in the area and then delivered them to the school free of charge. James did a wonderful tree planting demonstration for us.

Please check out the whole story and all the photos from the memorable tree planting ceremony via the link below: <https://www.saaled.org.za/reaching-out-to-the-kings.../>







## Proposed SAALED Webinars and Seminar Events for 2026:



### Webinar

**Early Years, Ready to Learn: Play, Purpose, and Progress**

**4 June 2026**

 <p><b>Positive Discipline</b></p>	<p><b>Annual Seminar at Dainfern College</b></p> <p><b>Boundaries with Heart</b></p> <p><b>25 June 2026</b></p>
	<p><b>Webinar</b></p> <p><b>Connected or controlled? Tech, Teens, and Teaching Boundaries</b></p> <p><b>28 July 2026</b></p>
	<p><b>Webinar</b></p> <p><b>Sensory Science: Bringing Experiments to Life for Neurodiverse Learners</b></p> <p><b>17 September 2026</b></p>
	<p><b>Webinar</b></p> <p><b>Reading for All: Creative and Inclusive Literacy Practices</b></p> <p><b>15 October 2026</b></p>

These events may be subject to change based on circumstances that may be unforeseen. This will be communicated in advance and closer to the time, as needed.

## Reminder – Adding SAALED as a beneficiary- MySchool MyDifference Programme

# MY DIFFERENCE



**SUPPORT SAALED EVERY TIME YOU SHOP AT WOOLWORTHS AT NO EXTRA COST**

1. Open the Woolworths app and log in or register
2. Tap "Loyalty"
3. Select "My Causes"
4. Tap "Add Cause"
5. Search "SAALED" and select it
6. At checkout, scan your MyDifference virtual card

★ **WANT SAALED AS YOUR MAIN CAUSE?**  
Be sure to keep only SAALED selected (multiple causes receive equal support)

🍏 Apple Pay user? Add your virtual card to Apple Wallet for quick access



### A Heartfelt Thank You to Michelle

We would also like to extend a heartfelt thank you to Michelle Decker for her three years of dedication and service to the SAALED Board. Your passion, commitment and steady support have made a meaningful difference to our journey, and we are truly grateful. We wish you all the best in your future endeavours.

### In conclusion

As we reflect on another inspiring season of learning and growth, we are reminded that inclusive education is not built in isolation. It is shaped through shared experiences, courageous conversations, and a collective commitment to seeing the potential in every learner. Thank you to our dedicated community of teachers, therapists, school leaders, parents and supporters who continue to champion environments where all children feel valued, understood, and empowered to succeed.

At SAALED, we remain encouraged by the passion, innovation, and care that so many of you bring into your spaces each day. May we continue to learn from one another, challenge traditional thinking where needed, and celebrate the small and significant moments of progress along the way.

Stay connected, keep inspired and thank you for continuing to make a meaningful difference in the lives of children and families.

With heartfelt appreciation,  
**Joe Pillay**  
Chairperson, SAALED

[joe.pillay@saaled.org.za](mailto:joe.pillay@saaled.org.za)

