



NEWSLETTER

In this issue:

Welcome - Page1

Why become a SAALED Member? - Pages 1-2

Webinar 1: Maths that Makes Sense-Differentiation without Drama-
Page 2

Proposed SAALED Webinars and Seminar Events 2026 - Pages 3-4

Meet our Board – Pages 5-8

Reminder: MySchool Update – Page 9

Conclusion - Page9

Membership fees for 2026:

Subscription fees and Webinar rates for 2026.

School Annual Membership fee:

R2400.00 and entitles 6 teachers to join the webinars and seminar at the member rate thereafter non-member rates apply.

Individual Annual Membership fee:

R350.00 and entitles you to join all events at the member rate.

Webinar fees for members:
R230.00 per webinar

Webinar fees for non-members:
R320.00 per webinar

5% of all bookings will be donated to our Outreach School, Kings School Muldersdrift

Schools/individuals who are in need, please reach out to SAALED and we will do our best to accommodate you.

Please liaise with your school and make payment as soon as possible.

BANK DETAILS:

S A ASSOC FOR LEARNING

First National Bank

Account No: 62046846020

Branch code: 250655

Please ensure that your name/school's name appears on any deposit notification.

Dear SAALED Members and Friends,

Welcome to 2026!

As we step into a brand-new year, we extend a heartfelt welcome to our SAALED community. A new year always brings fresh energy, renewed purpose, and the perfect opportunity to reflect, reset and reimagine what is possible for the communities in which we serve.

At SAALED, our commitment remains consistent: to advocate, support and empower learners with educational differences through collaboration, compassion and high-quality professional learning. This year promises meaningful conversations, insightful webinars, and continued connection with passionate professionals who believe, as we do, that every learner matters.

We look forward to learning together, growing together, and making a real difference—one learner, one classroom, and one community at a time. Here's to a year filled with purpose, progress, and possibilities.

Why Become a SAALED Member?

Joining SAALED isn't just about access — it's about belonging to a community that genuinely gets it. Whether you are part of a school or an individual, membership opens the door to meaningful professional learning, connection and impact.

We Offer School Membership at R2 400 per year:

Perfect for teams who believe learning is better together.

- Covers **6 teachers** (yes, six!) with access to **webinars and seminars at the member rate.**
- Ongoing savings on all future SAALED events.
- Cost-effective, collaborative, and honestly a no-brainer for staff development.

We also offer Individual Membership at R350 per year:

Small fee. Big value!

- Attend all SAALED events at the member rate!
- Stay connected to current thinking, best practice, and inclusive education conversations.
- Ideal for educators, therapists, psychologists, and anyone passionate about supporting diverse learners.

Not a member yet?

Click on the 'MEMBER' image to access our Membership Forms:



Our First Webinar: Maths that Makes Sense-Differentiation without Drama

Join us for the first Webinar of the Year! This is on **10 February 2026 at 18:00.**

You'll walk away with remedial strategies, tools, and ideas you can use immediately. Just maths that *clicks* for more learners.

Learn from the experienced **Cedarwood School Team:**

- **Sam Kaufman** – Educational Psychologist
- **Tammy Luhdo** – Foundation Phase Learning Support
- **Micayla Leigh** – Intermediate Phase Learning Support

Expect practical wisdom, real classroom examples, and zero fluff. Just maths that makes sense.





Bonus!! One lucky attendee will walk away with a **prize**, because good teaching deserves a little celebration too.


The poster features the SAALED logo at the top left, with the text 'ALL ABOUT LEARNING DIFFERENTLY' and 'SAALED WEBINAR'. The main title is 'MATHS THAT MAKES SENSE' in large, bold letters. Below the title, it says 'DIFFERENTIATION WITHOUT DRAMA'. Three circular portraits of the speakers are shown: Sam Kaufman, Tammy Luhdo, and Micayla Leigh. Below each portrait is their name and role. The text describes the webinar as a practical session on differentiating mathematics in a mainstream classroom. It includes the date (Tuesday 10 February 2026) and time (18h00). A price table shows R 230.00 for members and R 320.00 for non-members. The bottom of the poster includes social media icons, a website link (saaled.org.za), and the text 'BOOK ON THE SAALED WEBSITE'.

Click here to make a booking:



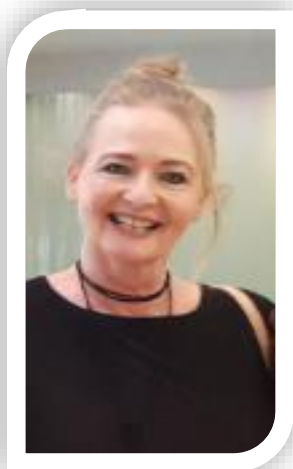
Proposed SAALED Webinars and Seminar Events for 2026:

	<p>Webinar</p> <p>Beyond Worksheets: Creative Maths Assessments</p> <p>5 March 2026</p>
	<p>Webinar</p> <p>Inside the Neurodivergent Classroom: Strategies That Work</p> <p>26 March 2026</p>
	<p>Webinar</p> <p>Keeping Teachers Well: Burnout, Balance, and Boundaries</p> <p>12 May 2026</p>
	<p>Webinar</p> <p>Early Years, Ready to Learn: Play, Purpose, and Progress</p> <p>4 June 2026</p>

	<p>Annual Seminar at Dainfern College</p> <p>Positive Discipline Reloaded: Boundaries with Heart</p> <p>25 June 2026</p>
	<p>Webinar</p> <p>Connected or controlled? Tech, Teens, and Teaching Boundaries</p> <p>28 July 2026</p>
	<p>Webinar</p> <p>Sensory Science: Bringing Experiments to Life for Neurodiverse Learners</p> <p>17 September 2026</p>
	<p>Webinar</p> <p>Reading for All: Creative and Inclusive Literacy Practices</p> <p>16 October 2026</p>

These events may be subject to change based on circumstances that may be unforeseen. This will be communicated in advance and closer to the time, as needed.

Meet our Board



Ms. Jennifer Cosslett - Treasurer



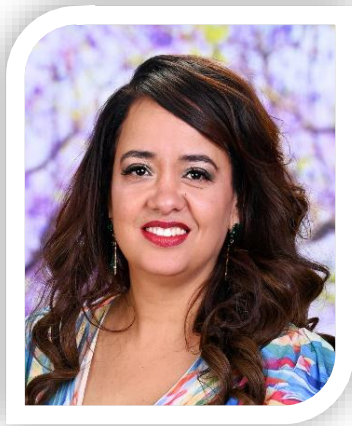
Mrs. Michelle Decker - Secretary



Mr. Ruan Fourie - Communication and Advertising



Mrs. Shirley Gray - Deputy Chairperson



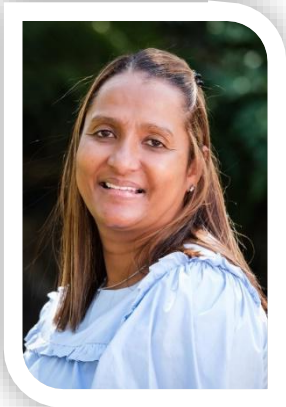
Mrs. Shannon Jacobs - Database and Website Management



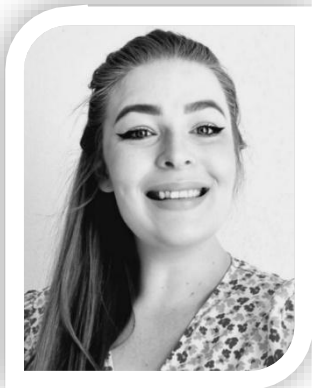
Ms. Pearl Makhene - Outreach Initiatives



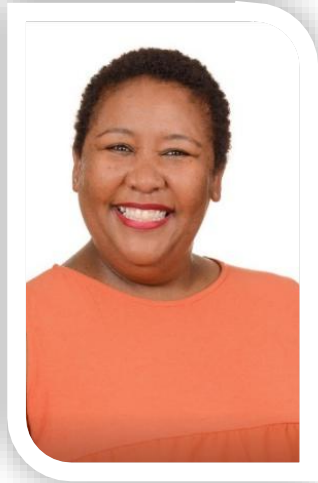
Mr. Jothindran Pillay - SAALED Chairperson



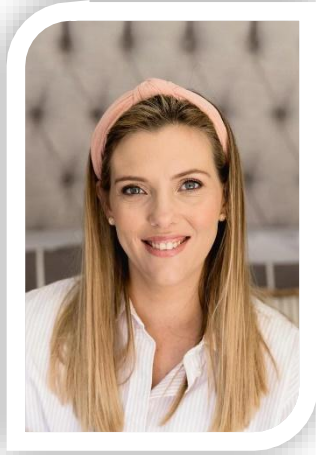
Mrs. Lucinda Pinto - Communication



Mrs. Storm Pollard - Memberships



Ms. Lerato Shuping - Social Media and Marketing



Dr. Chaland van Zyl - Co-opted member and SACE Applications Coordinator



Reminder - MySchool Update: Introducing the New MyDifference Programme

WHAT STAYS THE SAME	WHAT'S NEW (AND HOW IT BENEFITS YOU)
You remain a registered beneficiary/cause on MyDifference.	Now that WRewards and MySchool MyVillage MyPlanet have joined, you unlock access to a much larger Woolworths customer base.
Joining is free and supporters can still select up to three causes to support.	Reselection of causes keeps your supporters connected and committed, helping your cause receive steady, intentional support.
Once reselected, supporters still raise funds for your cause every time they shop and scan their MyDifference card at Woolworths, at no extra cost to them.	Supporters now earn even more benefits while giving back to a cause they care about, encouraging more frequent shopping and more funds for you. We also 'lock-in' cause selections annually, providing you with greater funding stability.
You will continue to receive monthly payments based on customer spend, paid 30 days in arrears.	Gain greater visibility and transparency on our Woolies app, where supporters can track total contributions and learn how your cause uses funds to inspire ongoing support.
The heart of the programme remains unchanged – making a difference through everyday choices.	No more juggling cards – any Woolworths card linked to MyDifference works, and online purchases count towards giving back automatically.
IMPORTANT DATES TO REMEMBER	
<ol style="list-style-type: none"> Payments: Standard beneficiary payments continue until 30 June 2026 Cause selection: Window period runs from 1 July 2025 to 30 June 2026 Cards: MySchool MyVillage MyPlanet and WRewards cards remain active until 30 June 2026 	

WRewards and MySchool MyVillage MyPlanet have officially joined forces to create **MyDifference** — a bigger, stronger, and more connected loyalty programme. This new platform carries forward the legacy of MySchool while offering improved visibility, simplified giving, and greater opportunities for causes like ours to thrive.

We want to reassure our SAALED community that this transition comes with built-in support.

As MyDifference rolls out, we will keep you informed and guide you through any steps needed to ensure your support for SAALED continues seamlessly. We are grateful for every swipe, tap, and contribution you have made through MySchool — and we are excited to see how this new programme strengthens our ability to serve learners with educational differences.

MYDIFFERENCE



In conclusion

As we look ahead to the year, we do so with a sense of excitement and purpose. There are new ideas to explore, meaningful opportunities to create impact, and continued collaboration that strengthens our work. With the ongoing support of our community, a shared resilience in the face of challenges, and a collective commitment to growth, we are well positioned for a year of progress and success. Thank you for walking this journey with us—we look forward to all that lies ahead.

Stay connected, stay inspired and keep making a difference!

With heartfelt appreciation,

Joe Pillay

Chairperson, SAALED

joe.pillay@saaled.org.za

